

**AFP Antibody (N-term)**  
**Mouse Monoclonal Antibody (Mab)**  
**Catalog # AM1835a****Specification**

---

**AFP Antibody (N-term) - Product Information**

Application	WB,E
Primary Accession	<a href="#">P02771</a>
Other Accession	<a href="#">NP_001125.1</a>
Reactivity	Human
Host	Mouse
Clonality	Monoclonal
Isotype	Mouse IgM
Antigen Region	56-85

**AFP Antibody (N-term) - Additional Information****Gene ID** 174**Other Names**

Alpha-fetoprotein, Alpha-1-fetoprotein, Alpha-fetoglobulin, AFP, HPAFP

**Target/Specificity**

This AFP antibody is generated from mice immunized with a KLH conjugated synthetic peptide between 56-85 amino acids from the N-terminal region of human AFP.

**Dilution**

WB~~1:31.25

E~~Use at an assay dependent concentration.

**Format**

Purified monoclonal antibody supplied in PBS with 0.09% (W/V) sodium azide. This antibody is purified through a protein G column, followed by dialysis against PBS.

**Storage**

Maintain refrigerated at 2-8°C for up to 2 weeks. For long term storage store at -20°C in small aliquots to prevent freeze-thaw cycles.

**Precautions**

AFP Antibody (N-term) is for research use only and not for use in diagnostic or therapeutic procedures.

**AFP Antibody (N-term) - Protein Information****Name** AFP**Synonyms** HPAFP

**Function** Binds copper, nickel, and fatty acids as well as, and bilirubin less well than, serum albumin. Only a small percentage (less than 2%) of the human AFP shows estrogen-binding properties.

**Cellular Location**  
Secreted.

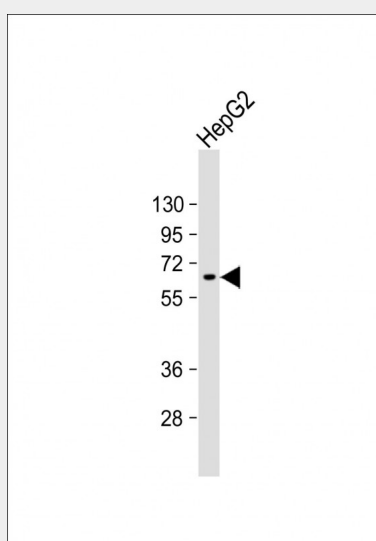
**Tissue Location**  
Plasma. Synthesized by the fetal liver and yolk sac

### AFP Antibody (N-term) - Protocols

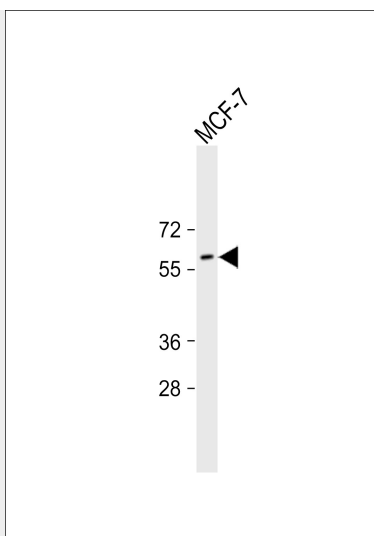
Provided below are standard protocols that you may find useful for product applications.

- [Western Blot](#)
- [Blocking Peptides](#)
- [Dot Blot](#)
- [Immunohistochemistry](#)
- [Immunofluorescence](#)
- [Immunoprecipitation](#)
- [Flow Cytometry](#)
- [Cell Culture](#)

### AFP Antibody (N-term) - Images



Anti- at 1:1000 dilution + HepG2 whole cell lysate Lysates/proteins at 20 µg per lane. Secondary Goat Anti-mouse IgM, (H+L), Peroxidase conjugated at 1/10000 dilution. Predicted band size : 69 kDa Blocking/Dilution buffer: 5% NFDM/TBST.



"Anti-AFP Antibody (N-term) at 1:31.25 dilution + MCF-7 whole cell lysate Secondary Goat Anti-mouse IgM, (H+L), Peroxidase conjugated at 1/10000 dilution. Predicted band size : 68678 Da Blocking/Dilution buffer: 5% NFDM/TBST."

#### **AFP Antibody (N-term) - Background**

alpha 1 Fetoprotein encodes alpha-fetoprotein, a major plasma protein produced by the yolk sac and the liver during fetal life. Alpha-fetoprotein expression in adults is often associated with hepatoma or teratoma. However, hereditary persistence of alpha-fetoprotein may also be found in individuals with no obvious pathology. The protein is thought to be the fetal counterpart of serum albumin, and the alpha-fetoprotein and albumin genes are present in tandem in the same transcriptional orientation on chromosome 4. Alpha-fetoprotein is found in monomeric as well as dimeric and trimeric forms, and binds copper, nickel, fatty acids and bilirubin. The level of alpha-fetoprotein in amniotic fluid is used to measure renal loss of protein to screen for spina bifida and anencephaly.

#### **AFP Antibody (N-term) - References**

Suriapranata, I.M., et al. Clin. Chim. Acta 411 (5-6), 351-358 (2010)  
Vibert, E., et al. Am. J. Transplant. 10(1):129-137(2010)  
Potapovich, A.I., et al. Br. J. Pharmacol. 158(5):1236-1247(2009)